



# ARES International (Thailand) Co.,Ltd.

1023 MS Siam Tower, 30th Floor, Rama 3 Road, Chongnonsi, Yannawa, Bangkok 10120



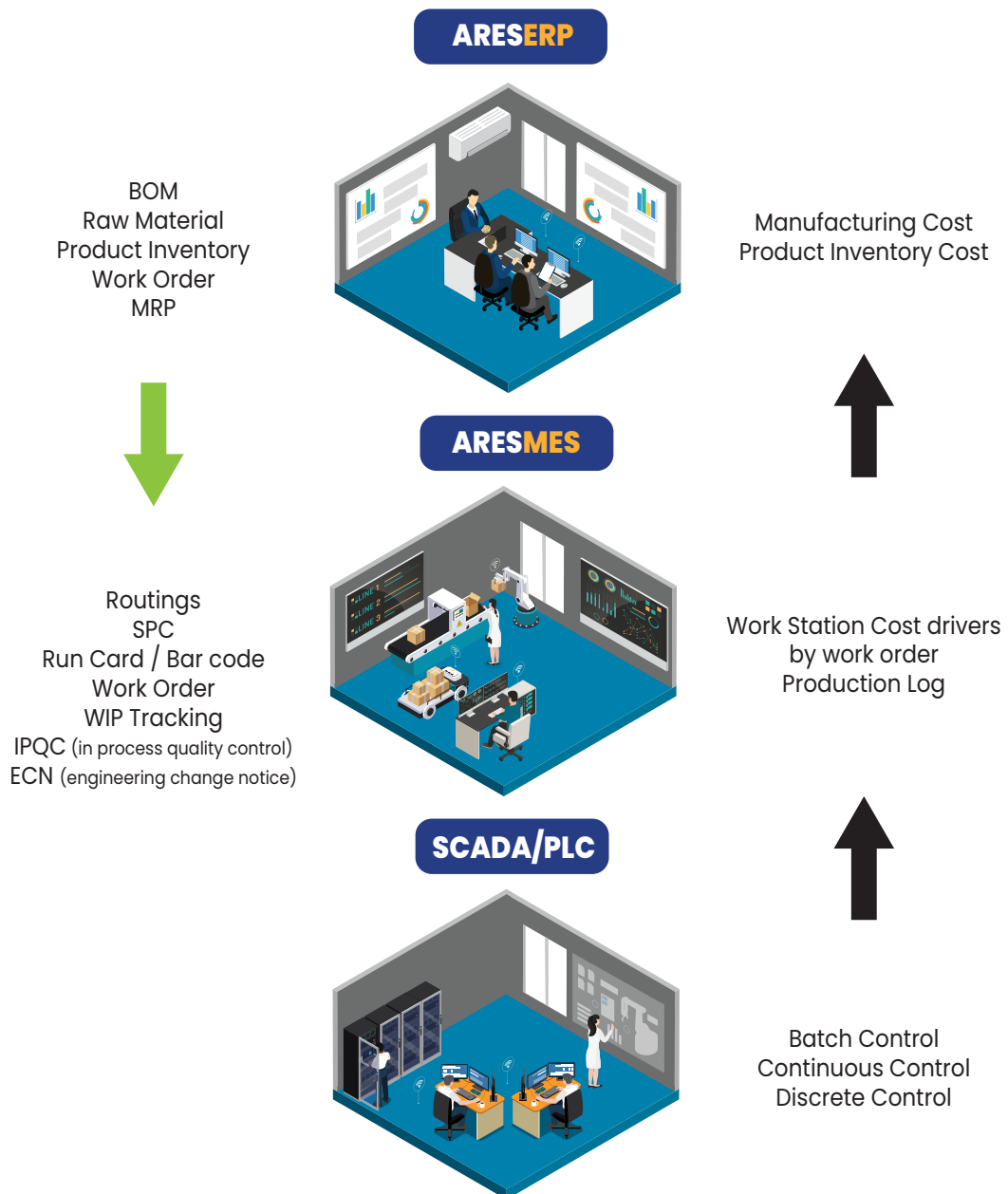
## MES

Manufacturing Execution System

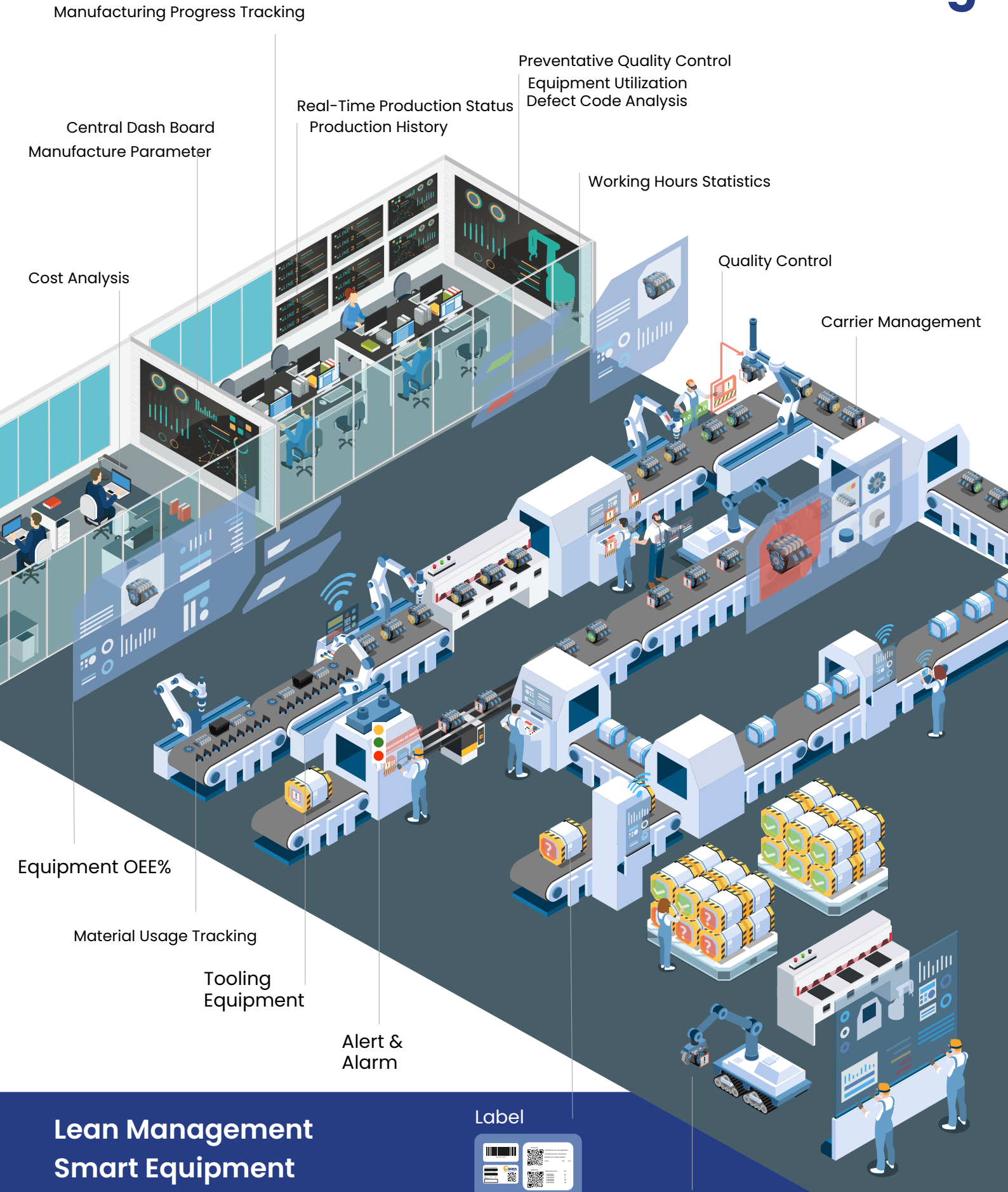
Transparency and traceability on multi-aspect of entire production cycle.  
**Real-Time** data analysis, identify & resolve issue with higher efficiency.

Present accurate capacity that utilize production resources & reduce costs.  
Establish "**Product Resume**" that increase your customers satisfaction.

**Manufacturing Execution System (MES)** a system that helps production to have more efficiency for all manufacturing operators. **MES** products can manage employee schedules, tell the ability of production machinery work and respond quickly when production is interrupted or unplanned problems encountered production process.



# Intelligent Manufacturing

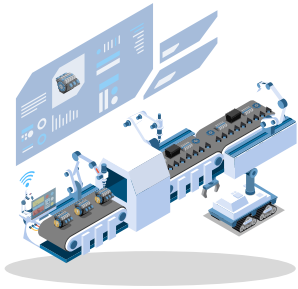


Lean Management  
Smart Equipment  
Intelligent Marketing  
Green Production



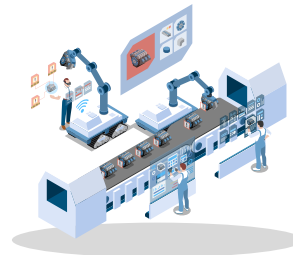
# MODULES & FUNCTIONS

## Production management (WIP)



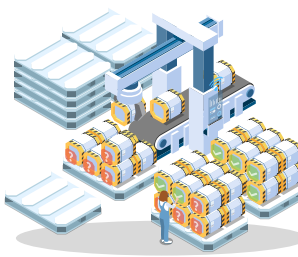
- Routing design
- Work station configure
- Work order
- Real-Time WIP control
- Schedule & capacity
- EDC collect
- Product history & resume
- PLC/IoT integration

## Product Quality Control (QC)



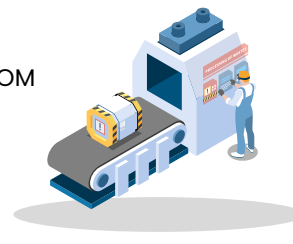
- SPC set up & rule
- Real-Time SPC chart
- QC product plan
- Production Quality Control
- FG history & resume

## Finished product/ Raw material management



- Production material input
- Matching raw material with BOM
- Raw material usage
- FG control
- Intergrate ERP Stock Module

## Alarm Management (ALM)



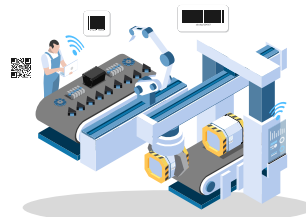
- Multiple Notifying Methods
- Immediate Notification
- Reply Setting

## Preventive Maintenance (PM)



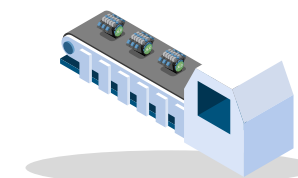
- Equipment maintenance
- Equipment repairation
- Parts of machine
- Tooling/Molding maintenance setting
- Device management

## Label



- Internal label by product & routing process
- FG label by product, customer, region, upon request
- Package tracking

## Carrier Management System (CMS)



- Carrier Management
- Carrier Condition Management
- Carrier Action Management
- Carrier Records

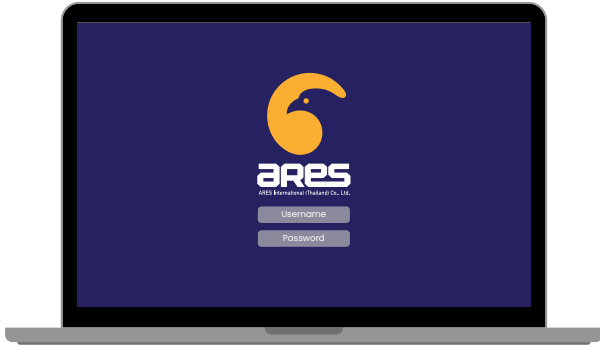
## DashBoard



- Graphic visualization
- Multiple Ready to use format
- Integrate database sources
- User self design UI

# Web Portal

Personal home page with authority management on enterprise reporting portal.



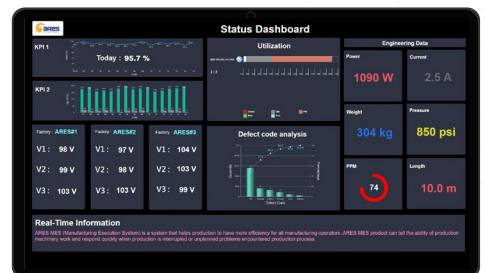
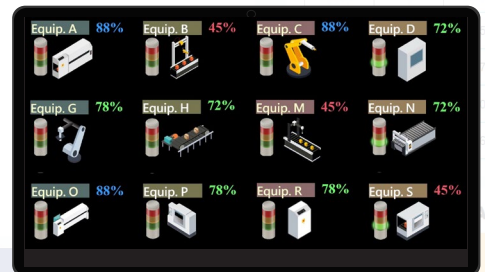
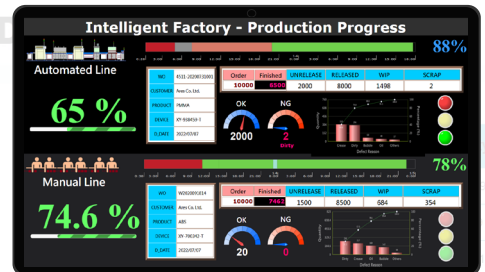
- ✓ Dynamic, Flexible report setting
- ✓ Support oracle, SQL server data source
- ✓ Drill down function
- ✓ Frequently mailing report
- ✓ Dynamic dash board setting
- ✓ Import excel template
- ✓ Export csv., Excel file



## Smart Factory Overview

# DashBoard

Real-Time DashBoard meet various angle of production you want to see.



Operation	Qty	Yield
ASMY	109	92.05
ASMY	59	84.32
ASMY	111	34
ASMY	110	98.88
ASMY	125	69.97
CLS	247	84.32
CLS	150	47.41
CLS	136	83.16

Parameter	Amps	Utilization
Parameter	109	92.05
Parameter	109	92.05

Operation	Qty	Yield	No.	Process	Step	Op	Para1	Para2	Para3
ASMY	109	92.05	20				0.9205157886797230	96.27736494703050	
ASMY	59	84.32	66				0.7373648896182070	18.94873060237090	
ASMY	111	34	5				0.7985229498188530	2.86515212257633	
ASMY	110	98.88	18	4	ASMY	1	0.9066873816338780	14.12485321710110	
ASMY	125	69.97	10	2	ASMY	2	0.8649985896451780	11.59838317502210	
CLS	247	84.32	49	18			0.0835824390331201	0.38008651682897	
CLS	150	47.41	76	3			0.3400319699850080	68.41874743738150	
CLS	136	83.16	1	3	ASMY	3	0.3071915615849180	32.31990196582160	
CLS	136	83.16	34	3	ASMY	3	0.2104105312425690	8.36426071280812	
CLS	136	83.16	16	4	ASMY	4	0.3320453196447550	19.58335332402810	

Multiple page view

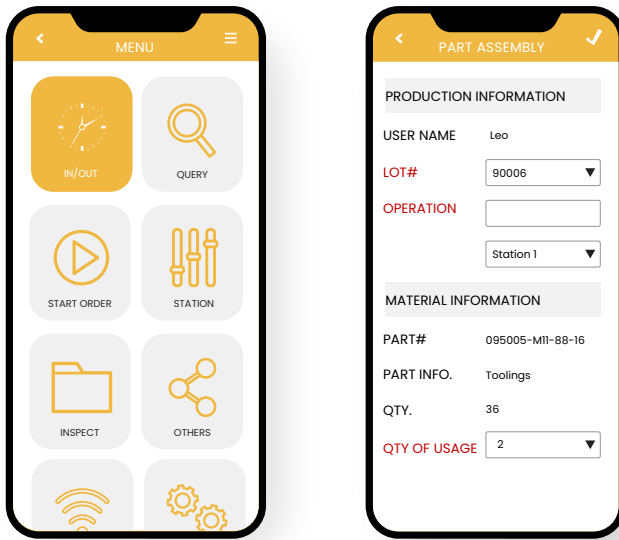
Component base

Integrated multiple database sources

Web-based user friendly (UI)

# Application

Easy management with manufacturing application on your devices.



- ✓ Convenient
- ✓ Improve efficiency
- ✓ Real-Time
- ✓ Digitalized

## BENEFITS



Realtime abnormal feedback, track fixing process, visualize production & QA related source tracing. Able to fit in tier 1 customer audit or process improvement requirement.



Oversight production line with multi sensor base on different operation environment. Utilize mobile device, scanning device and station design, simplify production process, increase worker's production efficiency.



Monitor Equipment and maintenance, reduce the possibility of capability decline and lower quality due to abnormal equipment.



Record production detail, statistic analysis KPI ex: Capacity, OEE, Yield rate, Quality...etc, Improve production process, order tracking. Real time collect machine data, system calculate analysis, reduce manual OEE or yield calculation, Strength machine's interconnection and interactivity.



Raw material usage accuracy, avoid wrong formula or material lead to high defective rate.



Integrate with ERP, executive able to manage different angle from issue order, worker reporting, production KPI, to accurate cost calculation..etc